

Data Sheet

## JetStream MINI Audio Networking Platform



### User-Friendly IP Audio Networking

The JetStream Mini is an integrated console engine and IP-based audio networking platform. Its design utilizes space effectively while being easy to set up and implement. The unit's 2 RU frame accommodates more than twice the standard number of inputs/outputs of comparable products and includes the latest networking technology for seamless interoperability with studio hard-disk systems and other devices.

Providing audio I/O, mixing, processing, mix-minus busses, routing and other functions, the JetStream Mini handles all of the functions of Logitek's digital consoles. A single JetStream Mini supports 32 channels of stereo audio shared between one to three Logitek consoles, with EQ and dynamics processing. Its fanless convection-cooled design provides silent operation for an air studio, and its compact size brings superior audio control capabilities to tight spaces such as newsrooms and engineering racks.

Simple RJ-45 StudioHub+™ format connections provide ultra-fast wiring. A DB connector option is also available.

#### KEY FEATURES

- Supports the latest IP and Ethernet protocols
- One JetStream Mini can handle up to 128 digital or analog inputs/outputs of your choice
- I/O cards available for stereo analog, stereo AES or S/PDIF, Mic preamp
- 12 GPI inputs and 16 GPI outputs on 4 DB-15 connectors
- No computer science degree needed to set up! Just plug in and let JetStream do the rest
- 24 mix-minus busses
- Seamless interoperability with most hard-disk systems
- Direct network transfer of audio from hard-disk playout systems via JetNet network conduit instead of sound cards
- Smooth digital mixing, one-button triggers, multiple busses
- Redundant power supplies

#### VERSATILE

- Full X-Y audio routing capability
- Built-in profanity delay and audio processing
- Supports all Logitek digital consoles

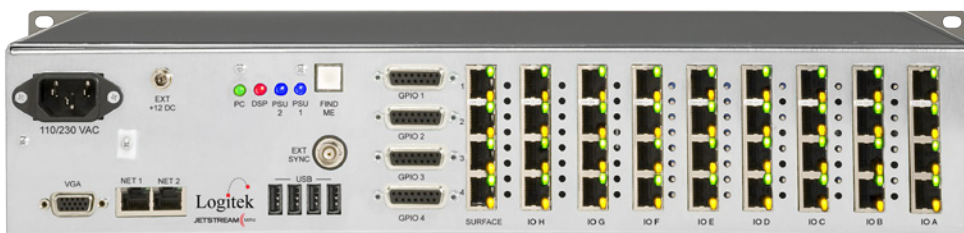
#### QUIET OPERATION:

- Fanless, convection-cooled design allows its use in an on-air or production studio

#### PLUG-IN CARD TYPES:

- 4 Stereo analog inputs (may be configured for mono)
- 4 Stereo analog output (may be configured for mono)
- 4 Stereo AES or S/PDIF inputs
- 4 Stereo AES or S/PDIF outputs
- 8 Stereo AES or S/PDIF digital inputs/outputs
- 4 mic preamps with phantom power and trimpot gain adjust
- 8 mic preamps high density card with phantom power and trimpot gain adjust

#### Rear Panel





Networked Console Systems

5622 Edgemoor Dr.  
Houston, TX 77081 USA  
713.664.4470  
Toll Free: 800.231.5870  
Fax: 713.664.4479  
www.logitekaudio.com

## Specifications

## JetStream MINI

### DIMENSIONS AND WEIGHT

- 19" W x 11.5" D x 3.5" H (48.2 x 29.2 x 8.9 cm) - 2 RU
- Fully loaded weight 10 Lbs (4.54 kg)

### GENERAL

- Card slots: 1 Audio processor, 1 Network processor, 1 GPIO, 8 Audio I/O
- Local audio I/O: 128 channels max (mono) on 8 I/O cards
- Any card type can be used in any slot
- Power: 95 - 120 volt or 220-240 volt universal input (25 watts maximum)
- Backup power: Connection for external backup PSU
- Start up time: 5 sec to local audio, 30 sec to networked audio

### AUDIO PROCESSOR CARD

- DSP: 32 bit floating point processing
- Mixing: 24 channels (stereo) shared between 1 to 3 consoles
- EQ & Dynamics: 24 channels allocated to either inputs or outputs
- Profanity delay: 30 sec stereo (60 sec mono) shared between consoles
- Mix-Minus outputs: 24 channels mono, may be combined for stereo
- Reference Level: -20 or -18 dBFS
- Internal sampling rate: User selectable 32K, 44.1K, or 48K
- External sync: 1 Hz to 48 kHz, word clock or GPS time pulse
- Console connections: 4 serial ports with activity indicators

### GPIO CARD

- Inputs: 12 channels
- Input level: +3.3 V, ground to activate, reverse voltage and over voltage protected
- Outputs: 16 channels
- Output format: optical isolated relay, non-polarized (50 V, 500 mA max load); functionality assigned in setup program

### MICROPHONE INPUT CARD

- Number of Channels: 4 microphones or 8 microphones (card dependent)
- Connectors: 4 StudioHub+™ format RJ-45 sockets with audio presence & phantom power indicators, or 8 channel card with DB-25 connectors (card dependent)
- Phantom power: +48 V switched via software
- Normal input level: -60 to -40 dBu, rear panel trim-pot adjustable
- Input impedance: 1k ohms balanced
- Common mode rejection ratio: -90 dB @ 1 kHz
- THD+N: .036% @ 0 dBu

- Frequency response: (20 Hz to 20 kHz) +/- .2 dB
- Dynamic range: 105 dB
- Conversion resolution: 24 bits

### ANALOG INPUT CARD

- Number of Channels: 8 mono inputs, may be combined for stereo
- Connectors: 4 StudioHub+™ format RJ-45 sockets with audio presence indicators or 1 DB-25 connector (card dependent)
- Signal format: Balanced or unbalanced
- Maximum input level: +24 dBu
- Normal input level: -20 to +8 dBu, rear panel trim-pot adjustable
- Input impedance: 50k ohms balanced or 25k ohms unbalanced; bridging
- Common mode rejection ratio: -90 dB @ 1 kHz
- THD+N: .008% @ 0 dBu
- Frequency response: (20 Hz to 20 kHz) +/- .2 dB
- Dynamic range: 105 dB
- Conversion resolution: 24 bits

### ANALOG OUTPUT CARD

- Number of Channels: 8 mono outputs, may be combined for stereo
- Connector: 4 StudioHub+™ format RJ-45 sockets with audio presence indicators or 1 DB-25 connector (card dependent)
- Signal format: Balanced or unbalanced
- Maximum output level: +24 dBu into 600 Ohms
- Normal output level: -20 to +8 dBu, rear panel trim-pot adjustable
- Output impedance: 60 Ohms
- THD+N: .008% @ 0 dBu
- Frequency response: (20 Hz to 20 kHz) +/- .2 dB
- Dynamic range: 105 dB
- Conversion resolution: 24 bits

### DIGITAL INPUT CARD

- Number of channels: 4 stereo inputs or 8 stereo inputs (card dependent)
- Connector: 4 StudioHub+™ format RJ-45 sockets with audio presence indicators or 1 DB-25 connector (card dependent)
- Digital format: AES/EBU or S/PDIF
- Rate conversion: All inputs, 24 bit resolution, user switchable in or out
- Input sample rate: 24kHz to 96kHz
- Precision: up to 24 bits
- Input impedance: 110 Ohms, transformer isolated
- Frequency response: (20 Hz to 20 kHz) +/- .1 dB
- THD+N: @ -20 dBFS: 24 bits .0002%
- Dynamic range: 140 dB
- Subcode detection: (validity, audio/no audio)

### DIGITAL OUTPUT CARD

- Number of channels: 4 stereo outputs or 8 stereo outputs (card dependent)
- Connector: 4 StudioHub+™ format RJ-45 sockets with audio presence indicators or 1 DB-25 connector (card dependent) Digital format: AES/EBU or S/PDIF, user switchable
- Sample rate: system sample rate from audio processor card
- Precision: 24 bits
- Output impedance: 110 ohms, transformer isolated
- Frequency response: (20 Hz to 20 kHz) +/- .1 dB
- THD+N: @ -20 dBFS: 24 bits .0002%
- Dynamic range: 140 dB
- Subcode generation: copyright not asserted when in S/PDIF mode

### NETWORK & VIDEO PROCESSOR CARD

- Embedded processor: 1.6 GHz, 1 GB DDR2
- OS: Windows® embedded
- Video: VGA, 1440 x 900 max resolution
- Video application: vScreen user configurable meter bridge replacement GUI
- USB: 4 ports for pointing devices or memory sticks
- Ethernet: 2 wired Gigabit ports
- Simultaneous audio streams: 64 per JetStream
- System size: 2000 streams total
- Network delay: 1 mSec max
- Fault tolerance: dual redundant networks when using two network switches
- Snake Mode: up to 3 JetStream units can be directly connected without a switch
- Streaming protocols: RTP, multicast and unicast
- Control protocols: IGMP, RTSP, SIP, SDP
- Managed network protocols: VLAN tagging, DHCP, DNS, JetNet
- Unmanaged network protocols: AutoIP (UPNP), mDNS
- Network sync: user settable address & port, packet rate, 1 Hz to 3 KHz Sync rate is independent of audio sample rate, Network can be locked to house sync input via a single JetStream, Automatic system master selection, automatic failover