



### Audio Routing and Mixing in One Easy Platform

The JetStream Mini is an integrated audio console engine and IP-based audio networking platform. Its design utilizes space effectively while being easy to set up and implement. The unit's 2 RU frame accommodates more than twice the standard number of inputs/outputs of comparable products and includes the latest networking technology for seamless interoperability with video routers, edit systems and program automation control systems.

Providing audio I/O, mixing, processing, mix-minus busses, routing and other functions, the JetStream Mini handles all of the functions of most Logitek digital consoles. A single JetStream Mini supports 32 channels of stereo audio shared between one to three Logitek consoles, with EQ and dynamics processing. Its fanless convection-cooled design provides silent operation for use in rooms with open microphones, and its compact size brings superior audio control capabilities to tight spaces such as news edit suites, production trucks and other OB vehicles.

Simple RJ-45 StudioHub+™ format connections provide ultra-fast wiring. DB connector fanouts are also available.

#### KEY FEATURES

- Supports the latest IP and Ethernet protocols
- One JetStream Mini can handle up to 128 digital or analog inputs/outputs of your choice
- I/O cards available for stereo analog, stereo AES or S/PDIF, Mic preamp
- 12 GPI inputs and 16 GPI outputs on 4 DB-15 connectors
- No computer science degree needed to set up! Just plug in and let JetStream do the rest
- 24 mix-minus busses
- Seamless interoperability with video routers, edit systems and program automation control systems
- Direct network transfer of audio from hard-disk playout systems via JetNet network conduit instead of sound cards
- Smooth digital mixing, one-button triggers, multiple busses
- Redundant power supplies

#### VERSATILE

- Full X-Y audio routing capability
- Built-in profanity delay and audio processing
- Supports most Logitek digital consoles

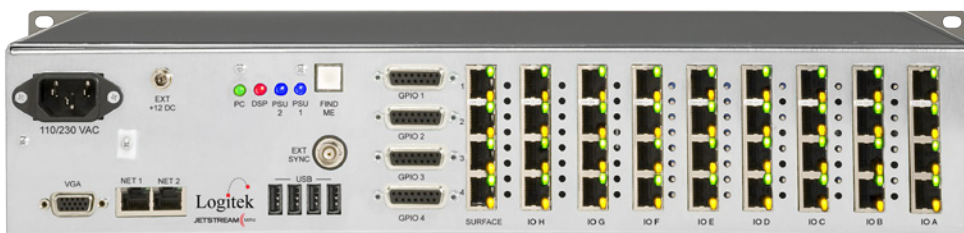
#### QUIET OPERATION:

- Fanless, convection-cooled design allows its use in studios with live mics

#### PLUG-IN CARD TYPES:

- 4 Stereo analog inputs (may be configured for mono)
- 4 Stereo analog output (may be configured for mono)
- 4 Stereo AES or S/PDIF inputs
- 4 Stereo AES or S/PDIF outputs
- 8 Stereo AES or S/PDIF digital inputs/outputs
- 4 mic preamps with phantom power and trimpot gain adjust
- 8 mic preamps high density card with phantom power and trimpot gain adjust

#### Rear Panel





Networked Console Systems

5622 Edgemoor Dr.  
Houston, TX 77081 USA  
713.664.4470  
Toll Free: 800.231.5870  
Fax: 713.664.4479  
www.logitekaudio.com

## Specifications

## JetStream MINI

### DIMENSIONS AND WEIGHT

- 19" W x 11.5" D x 3.5" H (48.2 x 29.2 x 8.9 cm) - 2 RU
- Fully loaded weight 10 Lbs (4.54 kg)

### GENERAL

- Card slots: 1 Audio processor, 1 Network processor, 1 GPIO, 8 Audio I/O
- Local audio I/O: 128 channels max (mono) on 8 I/O cards
- Any card type can be used in any slot
- Power: 95 - 120 volt or 220-240 volt universal input (25 watts maximum)
- Backup power: Connection for external backup PSU
- Start up time: 5 sec to local audio, 30 sec to networked audio

### AUDIO PROCESSOR CARD

- DSP: 32 bit floating point processing
- Mixing: 24 channels (stereo) shared between 1 to 3 consoles
- EQ & Dynamics: 24 channels allocated to either inputs or outputs
- Profanity delay: 30 sec stereo (60 sec mono) shared between consoles
- Mix-Minus outputs: 24 channels mono, may be combined for stereo
- Reference Level: -20 or -18 dBFS
- Internal sampling rate: User selectable 32K, 44.1K, or 48K
- External sync: 1 Hz to 48 kHz, word clock or GPS time pulse
- Console connections: 4 serial ports with activity indicators

### GPIO CARD

- Inputs: 12 channels
- Input level: +3.3 V, ground to activate, reverse voltage and over voltage protected
- Outputs: 16 channels
- Output format: optical isolated relay, non-polarized (50 V, 500 mA max load); functionality assigned in setup program

### MICROPHONE INPUT CARD

- Number of Channels: 4 microphones or 8 microphones (card dependent)
- Connectors: 4 StudioHub+™ format RJ-45 sockets with audio presence & phantom power indicators, or 8 channel card with DB-25 connectors (card dependent)
- Phantom power: +48 V switched via software
- Normal input level: -60 to -40 dBu, rear panel trim-pot adjustable
- Input impedance: 1k ohms balanced
- Common mode rejection ratio: -90 dB @ 1 kHz
- THD+N: .036% @ 0 dBu

- Frequency response: (20 Hz to 20 kHz) +/- .2 dB
- Dynamic range: 105 dB
- Conversion resolution: 24 bits

### ANALOG INPUT CARD

- Number of Channels: 8 mono inputs, may be combined for stereo
- Connectors: 4 StudioHub+™ format RJ-45 sockets with audio presence indicators or 1 DB-25 connector (card dependent)
- Signal format: Balanced or unbalanced
- Maximum input level: +24 dBu
- Normal input level: -20 to +8 dBu, rear panel trim-pot adjustable
- Input impedance: 50k ohms balanced or 25k ohms unbalanced; bridging
- Common mode rejection ratio: -90 dB @ 1 kHz
- THD+N: .008% @ 0 dBu
- Frequency response: (20 Hz to 20 kHz) +/- .2 dB
- Dynamic range: 105 dB
- Conversion resolution: 24 bits

### ANALOG OUTPUT CARD

- Number of Channels: 8 mono outputs, may be combined for stereo
- Connector: 4 StudioHub+™ format RJ-45 sockets with audio presence indicators or 1 DB-25 connector (card dependent)
- Signal format: Balanced or unbalanced
- Maximum output level: +24 dBu into 600 Ohms
- Normal output level: -20 to +8 dBu, rear panel trim-pot adjustable
- Output impedance: 60 Ohms
- THD+N: .008% @ 0 dBu
- Frequency response: (20 Hz to 20 kHz) +/- .2 dB
- Dynamic range: 105 dB
- Conversion resolution: 24 bits

### DIGITAL INPUT CARD

- Number of channels: 4 stereo inputs or 8 stereo inputs (card dependent)
- Connector: 4 StudioHub+™ format RJ-45 sockets with audio presence indicators or 1 DB-25 connector (card dependent)
- Digital format: AES/EBU or S/PDIF
- Rate conversion: All inputs, 24 bit resolution, user switchable in or out
- Input sample rate: 24kHz to 96kHz
- Precision: up to 24 bits
- Input impedance: 110 Ohms, transformer isolated
- Frequency response: (20 Hz to 20 kHz) +/- .1 dB
- THD+N: @ -20 dBFS: 24 bits .0002%
- Dynamic range: 140 dB
- Subcode detection: (validity, audio/no audio)

### DIGITAL OUTPUT CARD

- Number of channels: 4 stereo outputs or 8 stereo outputs (card dependent)
- Connector: 4 StudioHub+™ format RJ-45 sockets with audio presence indicators or 1 DB-25 connector (card dependent) Digital format: AES/EBU or S/PDIF, user switchable
- Sample rate: system sample rate from audio processor card
- Precision: 24 bits
- Output impedance: 110 ohms, transformer isolated
- Frequency response: (20 Hz to 20 kHz) +/- .1 dB
- THD+N: @ -20 dBFS: 24 bits .0002%
- Dynamic range: 140 dB
- Subcode generation: copyright not asserted when in S/PDIF mode

### NETWORK & VIDEO PROCESSOR CARD

- Embedded processor: 1.6 GHz, 1 GB DDR2
- OS: Windows® embedded
- Video: VGA, 1440 x 900 max resolution
- Video application: vScreen user configurable meter bridge replacement GUI
- USB: 4 ports for pointing devices or memory sticks
- Ethernet: 2 wired Gigabit ports
- Simultaneous audio streams: 64 per JetStream
- System size: 2000 streams total
- Network delay: 1 mSec max
- Fault tolerance: dual redundant networks when using two network switches
- Snake Mode: up to 3 JetStream units can be directly connected without a switch
- Streaming protocols: RTP, multicast and unicast
- Control protocols: IGMP, RTSP, SIP, SDP
- Managed network protocols: VLAN tagging, DHCP, DNS, JetNet
- Unmanaged network protocols: AutoIP (UPNP), mDNS
- Network sync: user settable address & port, packet rate, 1 Hz to 3 KHz Sync rate is independent of audio sample rate, Network can be locked to house sync input via a single JetStream, Automatic system master selection, automatic failover